

## APPENDIX C



# North Harrow Area Parking Review

**PUBLIC CONSULTATION**

**IMPORTANT – THIS AFFECTS YOU – PLEASE RESPOND**

# North Harrow Area Parking Review

## What this is about?

This is an informal public consultation document aimed at gathering information from residents and businesses about parking problems on their roads to establish which parking measures will work for you. This consultation is the second stage of a three stage consultation process. The first stage was to hold a Stakeholder meeting which was held on the 17th July 2013 to determine the area that will be consulted (this was NOT a public meeting).

It is now imperative that you respond to this leaflet with your views so that officers are able to clearly identify where problems exist and what measures you would support. Your response will determine the areas that will be subject to further investigations with a view to the potential implementation of parking control measures such as CPZ (controlled parking zone) controls. Any proposed parking controls will be progressed to the third stage of the consultation process which takes the form of a Statutory Consultation. Parking controls will only be implemented where there is majority support for measures. New measures can be installed on a road by road basis where majority support is received.

This public consultation will run for a total period of 21 days which will start from 12th September to 3rd October 2013.

**It is important to note that once this North Harrow parking review is completed it is possible that there will NOT be another review carried out again for several years. This is mainly due to a reduction in future funding and pressing requests to review other areas of the borough.**

It is therefore very important that you let us know of any parking issues that occur so that we can address them within this review.

## Introduction

The North Harrow Area is a mixture of residential roads with a number of businesses and shops located centrally to the traffic signalled junction where Station Road meets Pinner Road. There are currently no controlled parking zones in the review area but a mixture of existing pay and display parking is found outside the shopping areas. In addition to these on street parking bays there is the centrally located Cambridge Road public car park located to the rear of the shops.

In 2012, additional on-street parking bays were provided to support the demand for local parking and assist existing businesses and traders in the North Harrow area, however, with the new development of flats and Gym located on the junction of Station Road and Pinner Road there has continued to be an increase in demand for central parking facilities.

The North Harrow review is being progressed using the following Council agreed project stages;

Stage 1: Stakeholders Meeting

Stage 2: Public Consultation

Stage 3: Statutory Consultation and Implementation

### *Stakeholders Meeting (Stage 1)*

On the 17th July 2013, a Stakeholder Meeting was held with key people from the local area including resident associations, businesses, Councillors, Police and certain residents that had previously shown an interest in parking matters for the area. The meeting discussed parking problems within North Harrow taking on board all attendees views whilst also agreeing on the

consultation area for the Public Consultation. The key concerns raised from the meeting relating to the parking review were:

- Parking concerns from residents of the County Roads area.
- On street parking bay charges affecting local traders and businesses
- Parking in and around the area of the Community Centre
- The impact of local business parking in residential roads
- Safety issues for residents as a result of poor driving behaviours from business and commuter parking.
- Permit costs for Residents and business when implementing a new Controlled Parking Zone (CPZ)
- Suitable parking for school drop off, and pick up times
- General increase in parking demand for the area

## *Public Consultation (Stage 2)*

This is the stage we are currently at so we now request that you inform us of any parking problems that you encounter on your street by filling out the enclosed questionnaire. We would also like you to confirm to us if you would support parking control measures, and if so, which measures you would like to see implemented.

From the Stakeholders meeting the consultation boundary was agreed for the North Harrow Area and is shown on the plan overleaf. Please note that the area being consulted over is not necessarily the area everyone will be experiencing problems but it covers the whole of the North Harrow area giving everyone a chance to make comment. Your consultation responses will provide the Council with a summary of peoples views so we urge you to respond.

Parking control measures can be tailored to suit the needs of individual roads should opinions vary and if it is deemed suitable. Measures such as Controlled Parking Zones (CPZ's) will include yellow lines and resident parking bays paid for by an annual fee (refer to permit charges listed overleaf), or just double yellow lines in areas that are not included in the CPZ's (Refer to page 6 of the enclosed "Parking – Can We Help You" booklet)

In accordance with the Highway Code, we will automatically aim to include waiting restrictions in the form of double yellow lines at junctions where safety and access is proving problematic. Parking controls for roads that show majority support for measures will be re-consulted at the Statutory Consultation stage. This will give the public the opportunity to either object or support the advertised proposals from their comments made at this Public Consultation stage.

For more information on parking controls, the benefits and limitations, along with a number of frequently asked questions you can refer to the enclosed booklet '**Parking – Can We Help You**'.

## *Statutory Consultation (Stage 3)*

Following the results of the public consultation we will write a report to summarise your comments to the Traffic Advisory and Road Safety Panel (TARSAP) which will consist of various councillors who will make a recommendation for a formal decision from the Portfolio Holder. If majority support to introduce measures is received from consultation responses then the Portfolio Holder

# North Harrow Area Parking Review

is likely to recommend that a Statutory Consultation is to be carried out for the areas supporting new measures.

We will write to you in early 2014 to confirm exactly what decision has been made regarding this and at this time we will fully inform you of how the statutory consultation process will work. All consultees from the North Harrow Area Parking Review will receive a copy of this letter.

## Parking permit charges

Controlled Parking Zones (CPZ's) control commuter parking by regulating the kerbside space for residents and their visitors to find parking on their road. To avoid receiving a parking fine, the vehicle owner must display a recognised permit during the CPZ hours of restriction. Permits can only be purchased by residents/businesses living in the CPZ area. Parking permit charges are the same across the borough irrespective of the hours of control on your street (please refer to charges for permits section below)

It is important to note that if you do not wish to purchase a parking permit if a CPZ were to be introduced then you are not required to do so, however you will not be able to park in the permit bays during the controlled times.

Central government requires controlled parking schemes to be self-financing, so money raised from parking pays for the installation of a CPZ, parking attendants, the costs of processing parking fines, maintenance and other associated costs.

The current annual resident parking permit costs in Harrow are:

1st Vehicle in household	£62.40	2nd Vehicle	£93.60
3rd Vehicle	£124.80	4th and subsequent Vehicle	£156.00

Motorcycles - do not need a permit and can also park free-of-charge in any pay and display bay or permit bay in Harrow.

Visitor permits - £15.60 per book of 10, which is reduced to £7.80 for senior citizens or those receiving mobility benefits if the discount is claimed.

Business permits - £364 per annum

There is no charge for environmentally friendly vehicles but a permit is still required.

## Can I discuss my views with officers in more detail?

Yes. Officers will be available to discuss your concerns or suggestions in more detail during this consultation period through a series of public exhibitions.

### Dates of Public exhibitions:

**Saturday 14th September 2013 between 1.00pm – 5.00pm**

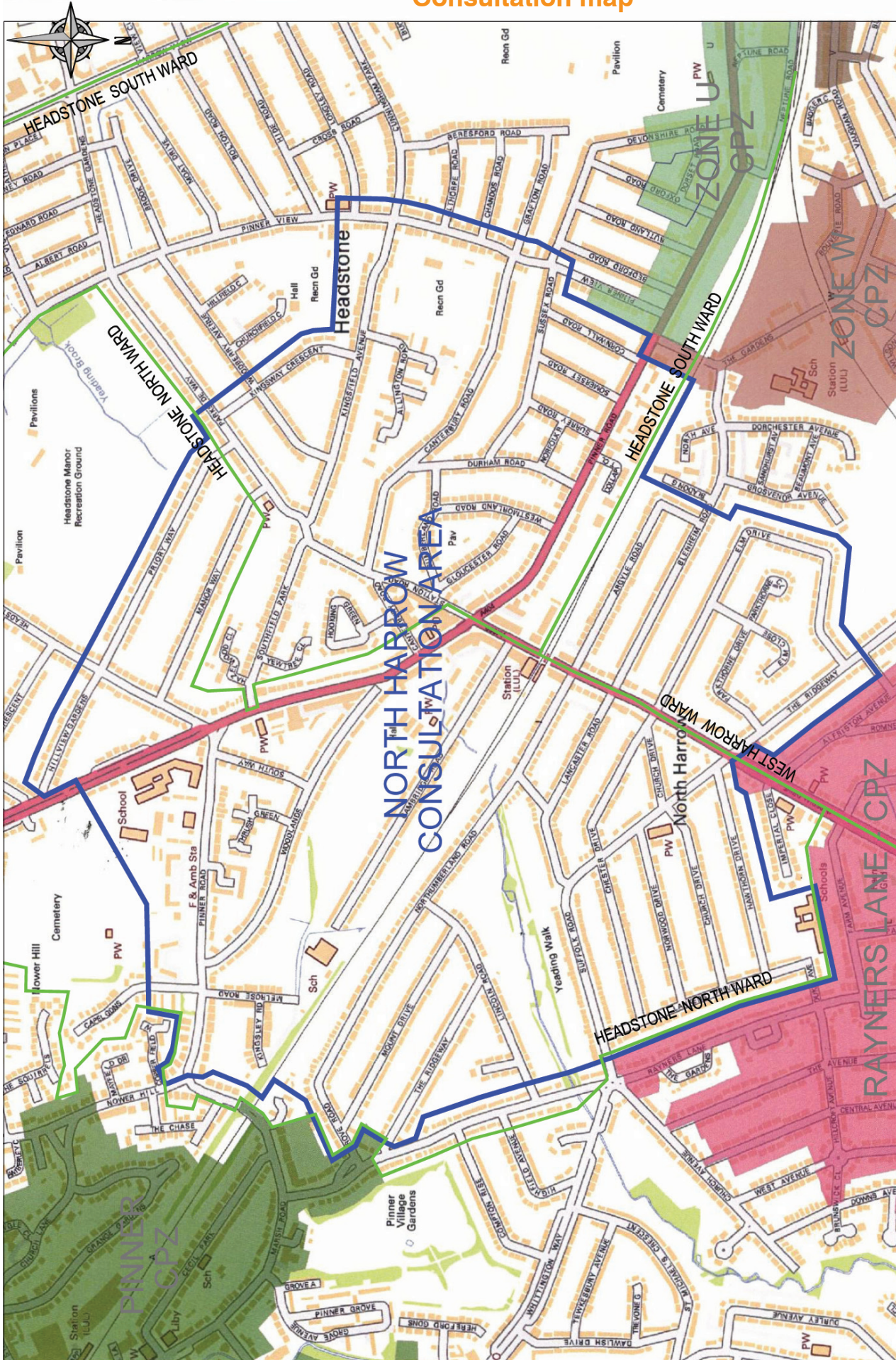
**Monday 16th September 2013 between 11.30am – 4.30pm**

**Friday 20th September 2013 between 3.30pm – 6.30pm**

**Venue: Savoy Court Community Centre, Station Road, North Harrow HA2 6BU.**

Officers will also be available during normal office hours. If you wish to ask them about the scheme you can contact the project engineer Alistair Macadam on 020 8424 1988.

## Consultation map

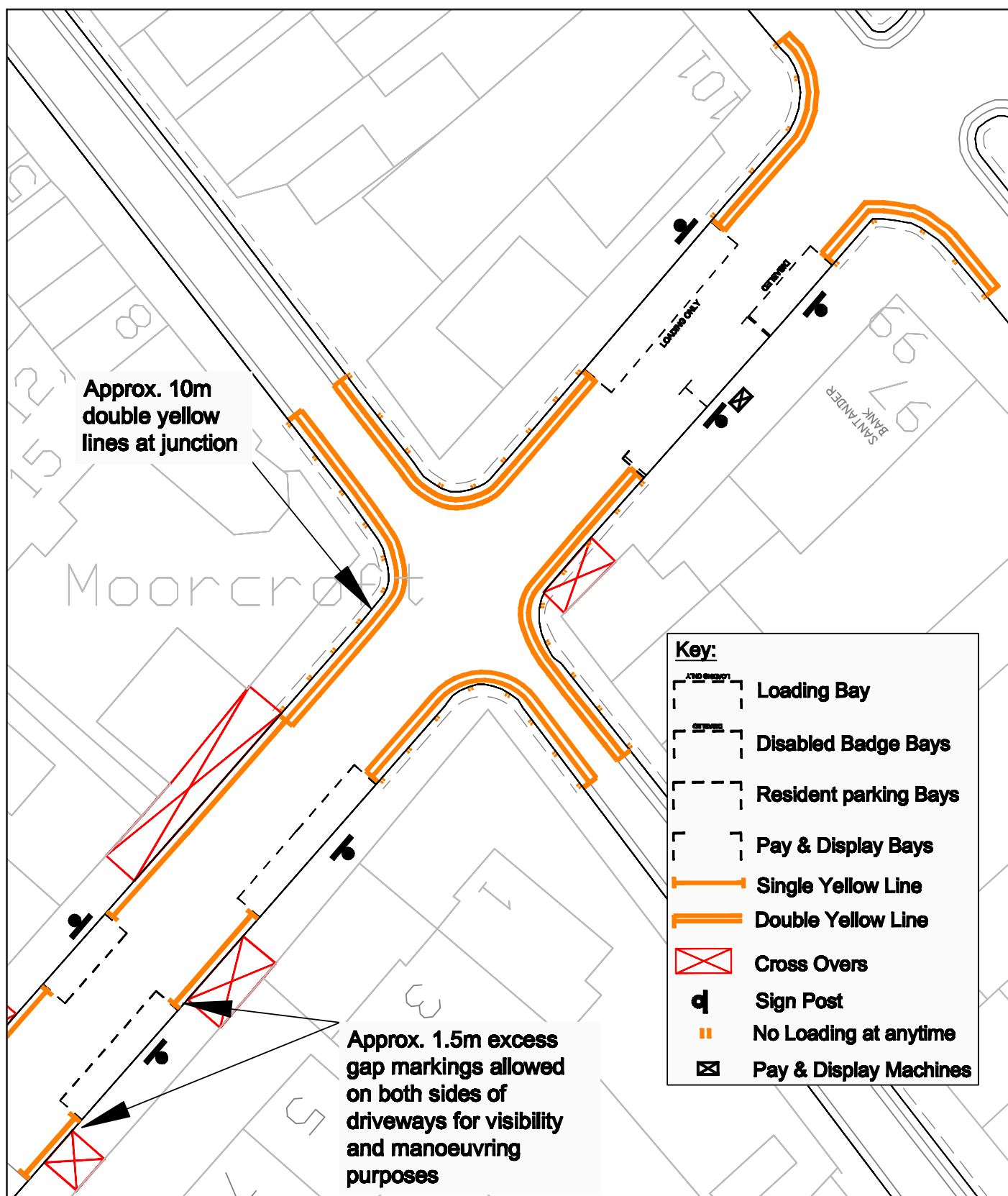


**KEY:**

- NORTH HARROW CONSULTATION BOUNDARY
- EXISTING WARD BOUNDARY

Reproduction from the Ordnance Survey Mapping with the permission of the Controller of Her Majesty's Stationery Office. Crown Copyright. Unauthorized reproduction infringes Crown Copyright and may lead to prosecution or civil proceedings. London Borough of Harrow, 10019206.

## Example of CPZ bays and yellow line markings



## What happens next?

We are aware that not everyone is of the same view and therefore have enclosed a questionnaire for you to complete in private. The information you provide will be analysed along with all other comments received.

In an effort for the Council to be more environmentally friendly and cost effective, you can submit your questionnaire on-line by visiting [www.harrow.gov.uk/consultations](http://www.harrow.gov.uk/consultations)

You then click on the link for the 'North Harrow Parking Review' and click on 'start survey' to make your comments. You will be asked to register your details before completing the survey. Alternatively, you can send the questionnaire using the enclosed prepaid envelope.

**All responses should be received no later than Thursday 3rd October 2013.**

As mentioned above we will analyse all the responses we receive, based on your completed questionnaires, and we will develop proposals in line with local views wherever possible.

Based on this consultation officers will present a report via TARSAP members for decision by the Portfolio Holder who will determine which measures are progressed to the Statutory Consultation Stage. This decision is likely to be made between December 2013 and February 2014.

We will contact all residents and businesses consulted to notify them of the results once a decision has been made by the Portfolio Holder.

## More information

We have provided links to web pages to view certain information, as this is an economical and effective way of providing information to you at a time that suits you. If you do not have internet access and are unable to get to a public library to use the computers there, then please contact the project engineer, whose contact details are as below:

Mr. Alistair Macadam  
Parking and Sustainable Transport  
Harrow Council,  
P.O. Box 39,  
Civic Centre, Harrow  
HA1 2XA  
Email: [transportation@harrow.gov.uk](mailto:transportation@harrow.gov.uk)  
Tel: 020 8424 1988

Please call the number below for a large print version of this document, or a summary of this document in your language.

- Albanian** Nëqoftëse gjuha Angleze nuk është gjuha juaj e parë, dhe keni nevojë për përkthimin e informatave të përmbajtura në këtë dokumentë, ju lutemi kontaktoni numërin dhënë.
- Arabic** إذا كانت الانجليزية ليست لغتك الاولى وتحتاج لترجمة معلومات هذه الوثيقة، الرجاء الاتصال على رقم
- Bengali** যদি ইংরেজি আপনার মাতৃভাষা না হয় এবং আপনি যদি এই প্রচারপত্রের তথ্যগুলোর অনুবাদ পেতে চান তাহলে যে টেলিফোন নম্বর দেওয়া আছে সেখানে দয়া করে যোগাযোগ করুন।
- Chinese** 如果你主要說用的語言不是英語而需要將這份文件的內容翻譯成中文，請打註明的電話號碼提出這個要求。
- Farsi** اگر انگلیسی زبان اول شما نیست و شما نیاز به ترجمه اطلاعات موجود در این مدرک را دارید، لطفاً با شماره داده شده تماس بگیرید
- Gujarati** જો ઈંગ્લિશ તમારી પ્રથમ ભાષા ન હોય અને આ દસ્તાવેજમાં રહેલ માહિતીનો તરજૂમો (ટ્રાન્સલેશન) તમને જોઈતો હોય તો કૃપા કરી જણાવેલ નંબર ઉપર ફોન કરો
- Hindi** यदि आपको अंग्रेजी समझ नहीं आती और आपको इस दस्तावेज़ में दी गई जानकारी का अनुवाद हिन्दी में चाहिए तो कृपया दिए गए नंबर पर फोन करें।
- Panjabi** ਜੇ ਤੁਹਾਨੂੰ ਅੰਗਰੇਜ਼ੀ ਸਮਝ ਨਹੀਂ ਆਉਂਦੀ ਤੇ ਤੁਹਾਨੂੰ ਇਸ ਦਸਤਾਵੇਜ਼ ਵਿਚ ਦਿੱਤੀ ਗਈ ਜਾਣਕਾਰੀ ਦਾ ਤਰਜਮਾ ਪੰਜਾਬੀ ਵਿਚ ਚਾਹੀਦਾ ਹੈ ਤਾਂ ਕਿਰਪਾ ਕਰਕੇ ਦਿੱਤੇ ਗਏ ਨੰਬਰ ਤੇ ਫੋਨ ਕਰੋ।
- Somali** Haddii Ingiriisku uusan ahayn afkaaga koowaad aadna u baahan tahay turjumidda xog ku jirta dokumentigan fadlan la xiriir lambarka lagu siiyey.
- Tamil** ஆங்கிலம் உங்கள் தாய்மொழியாக இல்லாதிருந்து இப்பத்திரத்திலிருக்கும் தகவலின் மொழிபெயர்ப்பு உங்களுக்கு தேவைப்பட்டால் தயவுசெய்து தரப்பட்ட தொலைபேசி எண்ணில் தொடர்பு கொள்ளவும்.
- Urdu** اگر انگریزی آپ کی مادری زبان نہیں ہے اور آپ کو اس دستاویز میں دی گئی معلومات کا اردو ترجمہ درکار ہے، تو براہ کرم دیئے گئے نمبر پر رابطہ کریں۔

**020 8424 1988**



## NORTH HARROW – PARKING REVIEW QUESTIONNAIRE

This questionnaire is available online at [www.harrow.gov.uk/consultations](http://www.harrow.gov.uk/consultations) and then click live and closed consultations. By completing it online it is a more environmentally friendly and cost effective way of informing us of your views. Alternatively, if you do not have access to the internet you can complete this questionnaire and return it using the enclosed prepaid envelope, to arrive by **3rd October 2013**

It is recommended that you read the leaflet and enclosed documents (or the website) before completing the questionnaire, as it may contain information that you are not aware of.

Due to the large number of responses anticipated, we cannot reply to you all individually.

Questionnaires returned without a name and address will not be officially recorded in the results of this consultation. We count your household/business as one response, rather than number of responses from individual residents/employees from the same address.

### PLEASE DO TAKE THE TIME TO COMPLETE THIS QUESTIONNAIRE - YOUR VIEWS COUNT

First Name ..... Family Name .....

Business Name (if applicable) .....

Property Number/Name ..... Street Name .....

Postcode ..... Date .....

**Please tick the most appropriate answer to each of the questions below, and use the space for comments on the back of this sheet if you need to.**

If you are not sure about any of the questions, please contact the project engineer whose details are given in the accompanying leaflet and at the above website address.

#### Q1 Are you a resident or business?

Resident

Business

Both

#### Q2 Do you experience parking problems in your street?

Yes

No

Don't know / No opinion

#### Q3 If yes, which of the following measures do you support to address these problems?

Do Nothing

Permit Bays - CPZ  
(controlled parking zone)

Single Yellow Lines

Pay & Display Parking

**Q4 If you do support either Permit Bays or Single Yellow Lines what times would you like them to be in operation and enforceable?**

Monday to Friday 10:00 to 11:00  14:00 to 15:00

Monday to Friday 12:00 to 13:00

Monday to Friday 08:00 to 18:30

Saturday  Sunday

**Q5 Do you consider that the existing parking, loading restrictions and disabled facilities for the area meet your needs?**

Yes  No  (If you answer "No" then please explain below)

**If you DO NOT want your response to be available for public inspection please tick here.**

**COMMENTS**

Please use this section if you need to make any further comments in relation to parking in the North Harrow Area - continue on a separate sheet if necessary